



THIS RENDERING MAY SHOW OPTIONAL ITEMS AND/OR UPGRADES NOT INCLUDED IN PROPOSAL, SPECIFICATIONS AND/OR DRAWINGS.

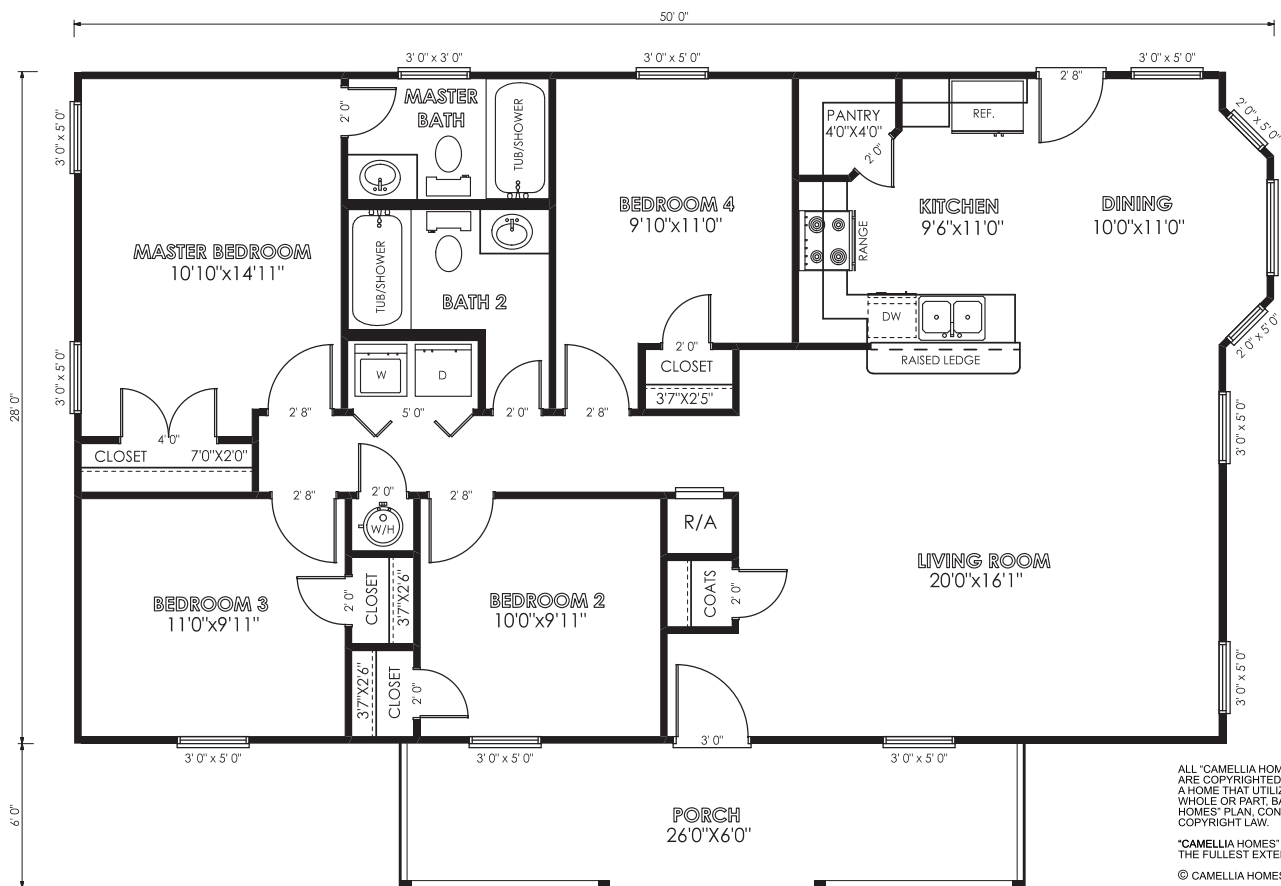


the 'San Marcos'

APPROXIMATE FOOTAGES:

	SIDING:	BRICK:
LIVING AREA:	1360 SQ. FT.	1431 SQ. FT.
FRONT PORCH:	156 SQ. FT.	156 SQ. FT.
TOTAL UNDER ROOF:	1516 SQ. FT.	1587 SQ. FT.

ROOM SIZES ARE APPROXIMATE



ALL 'CAMELLIA HOMES' FLOOR PLANS AND ELEVATIONS ARE COPYRIGHTED. REDRAWING AND/OR CONSTRUCTING A HOME THAT UTILIZES DESIGN ELEMENTS, EITHER IN WHOLE OR PART, BASED ON A COPYRIGHTED 'CAMELLIA HOMES' PLAN, CONSTITUTES INFRINGEMENT OF U.S. COPYRIGHT LAW.

'CAMELLIA HOMES' WILL ENFORCE COPYRIGHT LAWS TO THE FULLEST EXTENT.

© CAMELLIA HOMES 2009