

the Kingsville



ALL "SOUTHWEST HOMES" FLOOR PLANS AND ELEVATIONS ARE COPYRIGHTED. REDRAWING AND/OR CONSTRUCTING A HOME THAT UTILIZES DESIGN ELEMENTS, EITHER IN WHOLE OR PART, BASED ON A COPYRIGHTED "SOUTHWEST HOMES" PLAN, CONSTITUTES INFRINGEMENT OF U.S. COPYRIGHT LAW.

"SOUTHWEST HOMES" WILL ENFORCE COPYRIGHT LAWS TO THE FULLEST EXTENT.

© SOUTHWEST HOMES 2009

SOUTHWEST  **HOMES**
— Custom Built —

the Kingsville



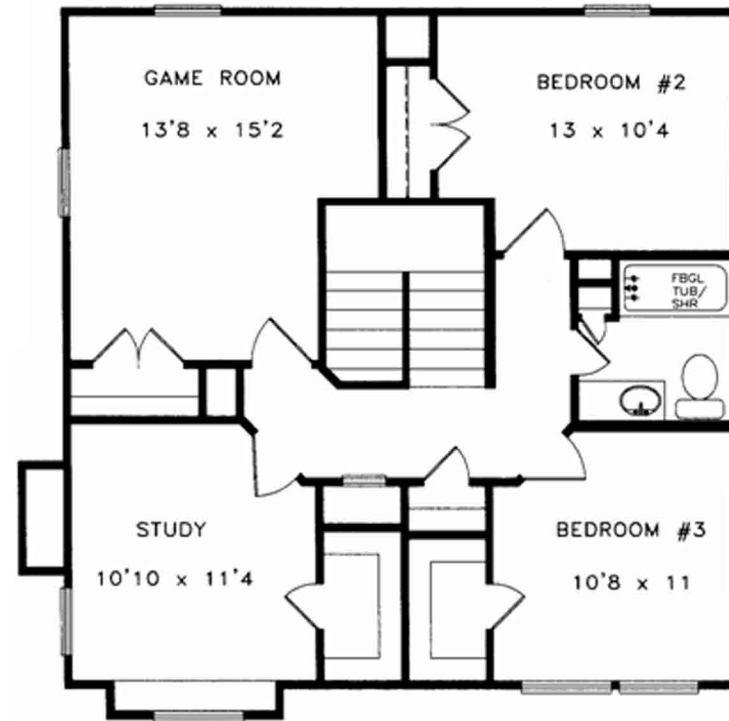
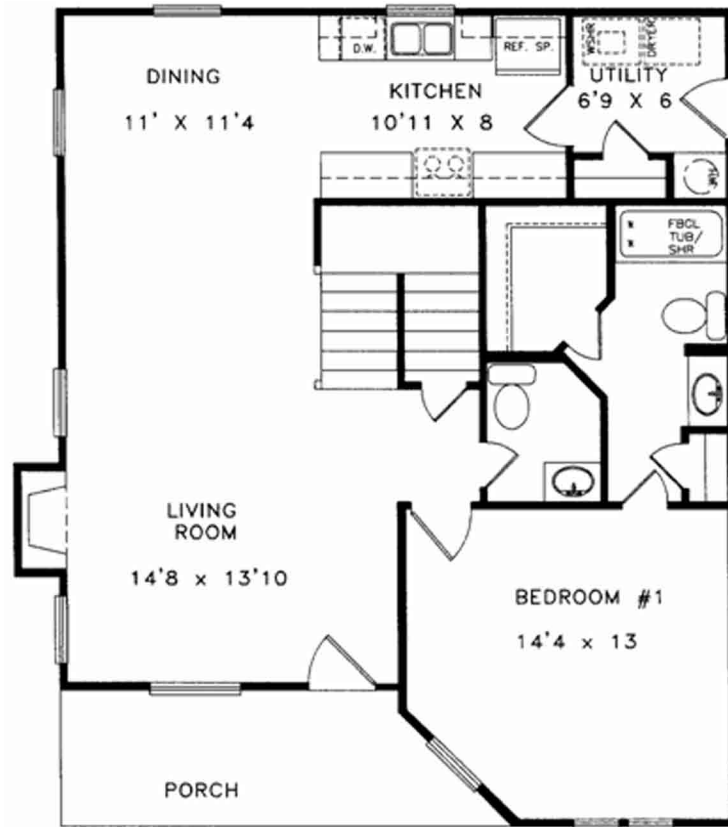
ALL "SOUTHWEST HOMES" FLOOR PLANS AND ELEVATIONS ARE COPYRIGHTED. REDRAWING AND/OR CONSTRUCTING A HOME THAT UTILIZES DESIGN ELEMENTS, EITHER IN WHOLE OR PART, BASED ON A COPYRIGHTED "SOUTHWEST HOMES" PLAN, CONSTITUTES INFRINGEMENT OF U.S. COPYRIGHT LAW.

"SOUTHWEST HOMES" WILL ENFORCE COPYRIGHT LAWS TO THE FULLEST EXTENT.

© SOUTHWEST HOMES 2009

SOUTHWEST  **HOMES**
— Custom Built —

the Kingsville



APPROXIMATE FOOTAGES:

1ST FLOOR LIVING AREA:	977 SQ. FT.
2ND FLOOR LIVING AREA:	906 SQ. FT.
PORCH:	102 SQ. FT.
TOTAL UNDER ROOF:	1985 SQ. FT.

ALL "SOUTHWEST HOMES" FLOOR PLANS AND ELEVATIONS ARE COPYRIGHTED. REDRAWING AND/OR CONSTRUCTING A HOME THAT UTILIZES DESIGN ELEMENTS, EITHER IN WHOLE OR PART, BASED ON A COPYRIGHTED "SOUTHWEST HOMES" PLAN, CONSTITUTES INFRINGEMENT OF U.S. COPYRIGHT LAW.

"SOUTHWEST HOMES" WILL ENFORCE COPYRIGHT LAWS TO THE FULLEST EXTENT.

©SOUTHWEST HOMES 2009

SOUTHWEST  **HOMES**
Custom Built